

IR Focus Monthly KPI (2019.02)



Individual Money Service Business



Payment Service Business

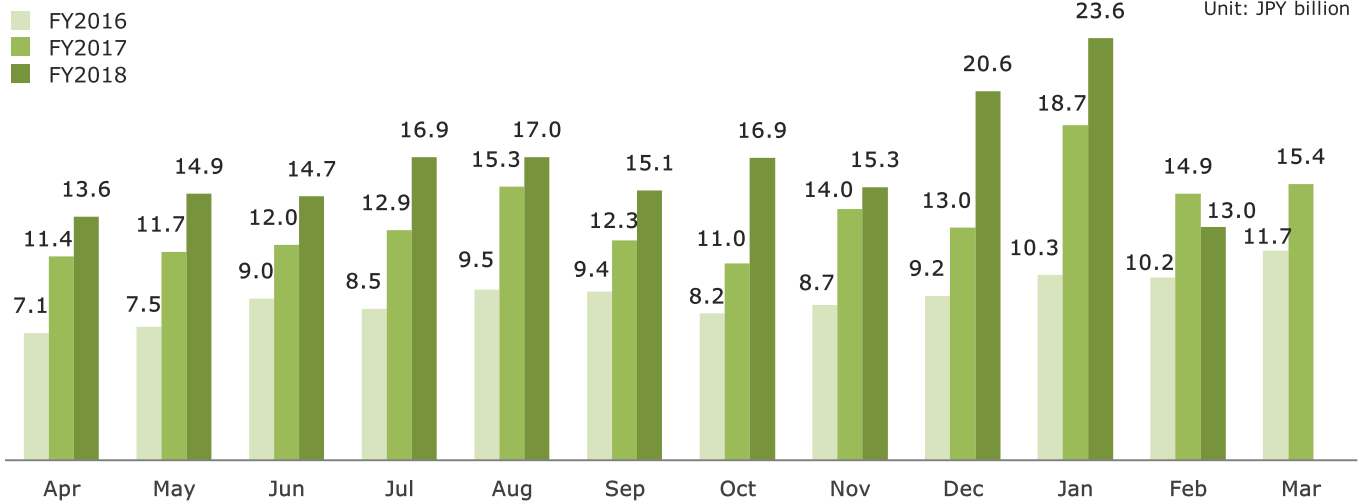


Corporate Support Business



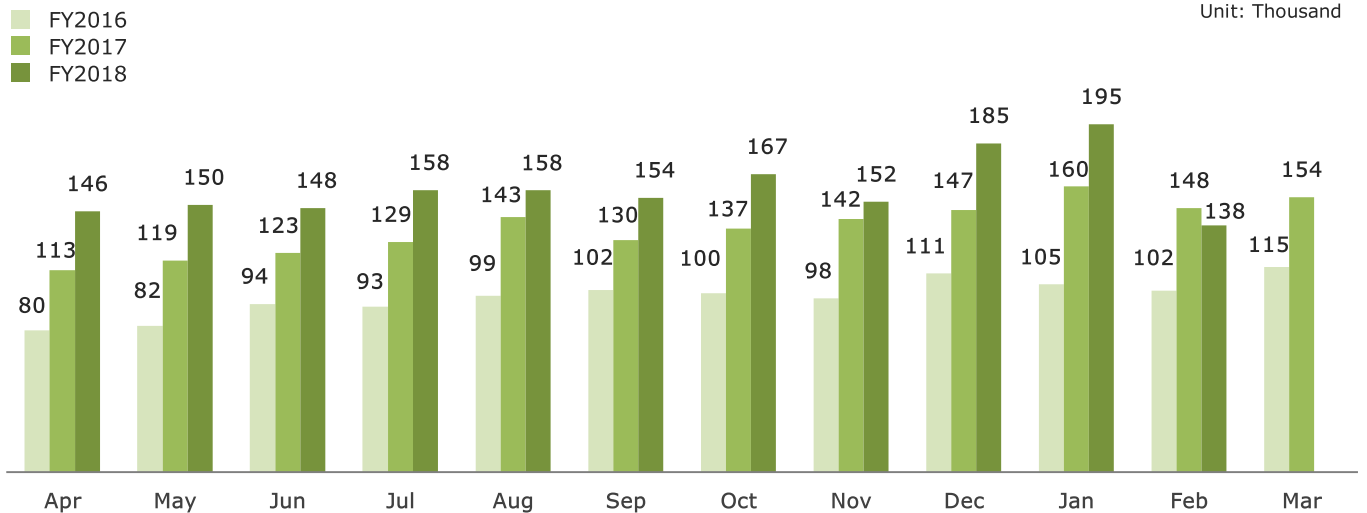
Individual Money Service Business(International Money Transfer)

International Money Transfer Amount



Year on Year												
	Apr	May	Jun	Jul	Aug	Sep	Oct	Nov	Dec	Jan	Feb	Mar
FY2017	+60%	+56%	+33%	+52%	+60%	+30%	+34%	+62%	+41%	+81%	+46%	+32%
FY2018	+19%	+28%	+23%	+32%	+11%	+23%	+54%	+9%	+59%	+26%	-13%	

Number of International Money Transfer

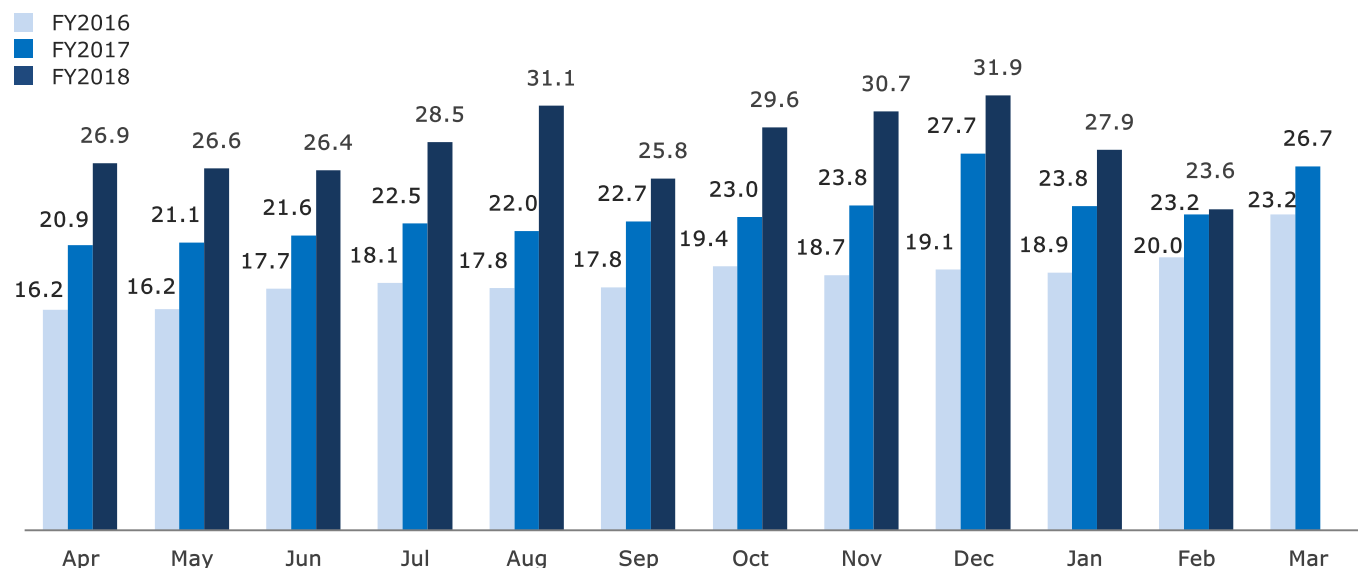


Year on Year												
	Apr	May	Jun	Jul	Aug	Sep	Oct	Nov	Dec	Jan	Feb	Mar
FY2017	+42%	+45%	+30%	+39%	+45%	+27%	+36%	+46%	+32%	+52%	+45%	+34%
FY2018	+29%	+26%	+21%	+23%	+10%	+18%	+22%	+7%	+26%	+22%	-7%	

Payment Service Business

● Processing Volume

Unit: JPY billion



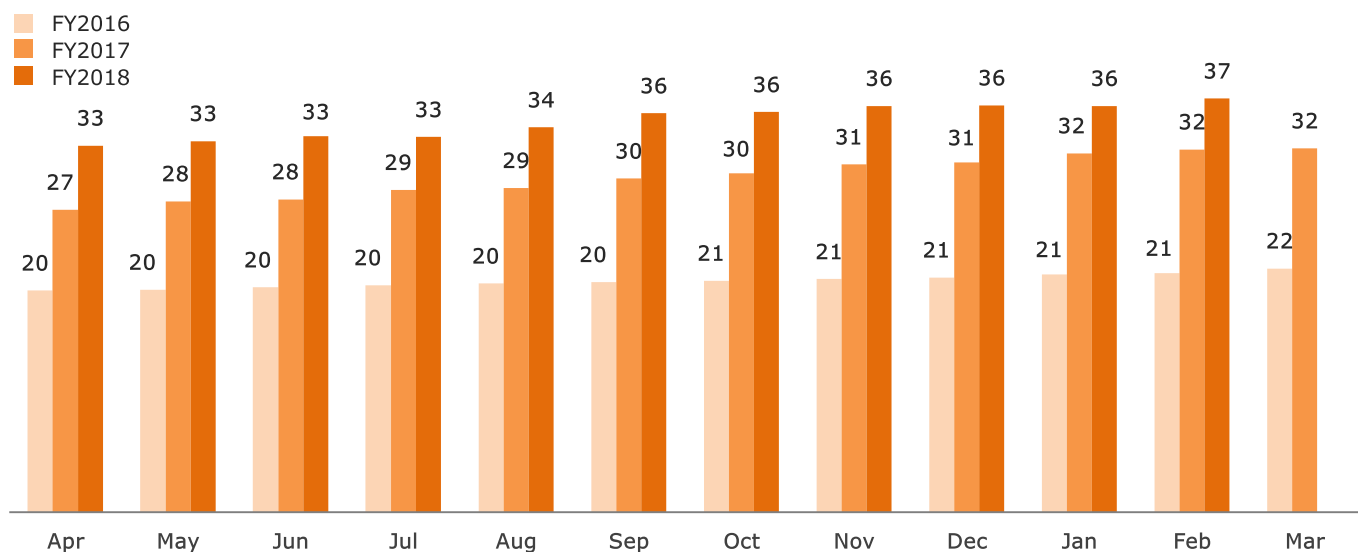
Year on Year

	Apr	May	Jun	Jul	Aug	Sep	Oct	Nov	Dec	Jan	Feb	Mar
FY2017	+30%	+30%	+22%	+24%	+24%	+27%	+19%	+27%	+45%	+26%	+16%	+15%
FY2018	+29%	+26%	+22%	+27%	+42%	+14%	+29%	+29%	+15%	+17%	+2%	

Corporate Support Business

● Cloud Product Sales for each month

Unit: JPY million



Year on Year

	Apr	May	Jun	Jul	Aug	Sep	Oct	Nov	Dec	Jan	Feb	Mar
FY2017	+36%	+40%	+39%	+42%	+42%	+45%	+46%	+49%	+49%	+51%	+52%	+49%
FY2018	+21%	+19%	+20%	+16%	+19%	+20%	+18%	+17%	+16%	+13%	+14%	

IR Contacts

Tel 02-2038-2791

Email ir@sbi-finsol.co.jp

Site <https://www.sbi-finsol.co.jp/kr/>

Address 17F Two IFC, 10, Gukjegeumyung-ro, Yeongdeungpo-gu, Seoul, Korea

※Financial data in this document is not audited by external auditor is prepared for investors' convenience. It may be revised during auditing process by external auditor.