

# IR Focus Monthly KPI (2018.11)



## Individual Money Service Business



## Payment Service Business

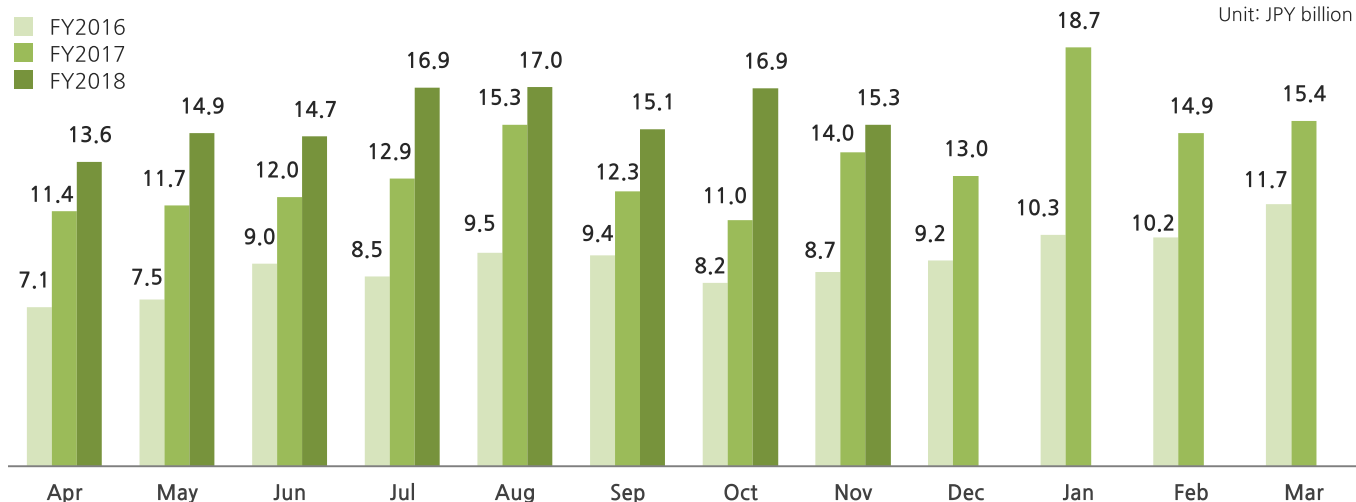


## Corporate Support Business



## Individual Money Service Business(International Money Transfer)

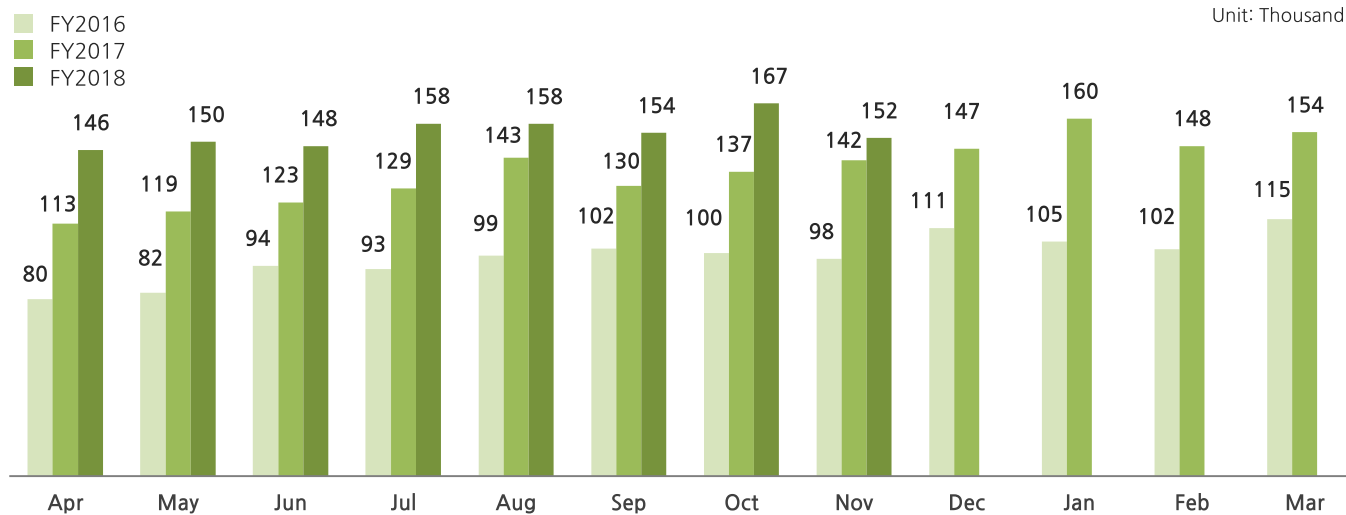
### ● International Money Transfer Amount



#### Year on Year

	Apr	May	Jun	Jul	Aug	Sep	Oct	Nov	Dec	Jan	Feb	Mar
FY2017	+60%	+56%	+33%	+52%	+60%	+30%	+34%	+62%	+41%	+81%	+46%	+32%
FY2018	+19%	+28%	+23%	+32%	+11%	+23%	+54%	+9%				

### ● Number of International Money Transfer



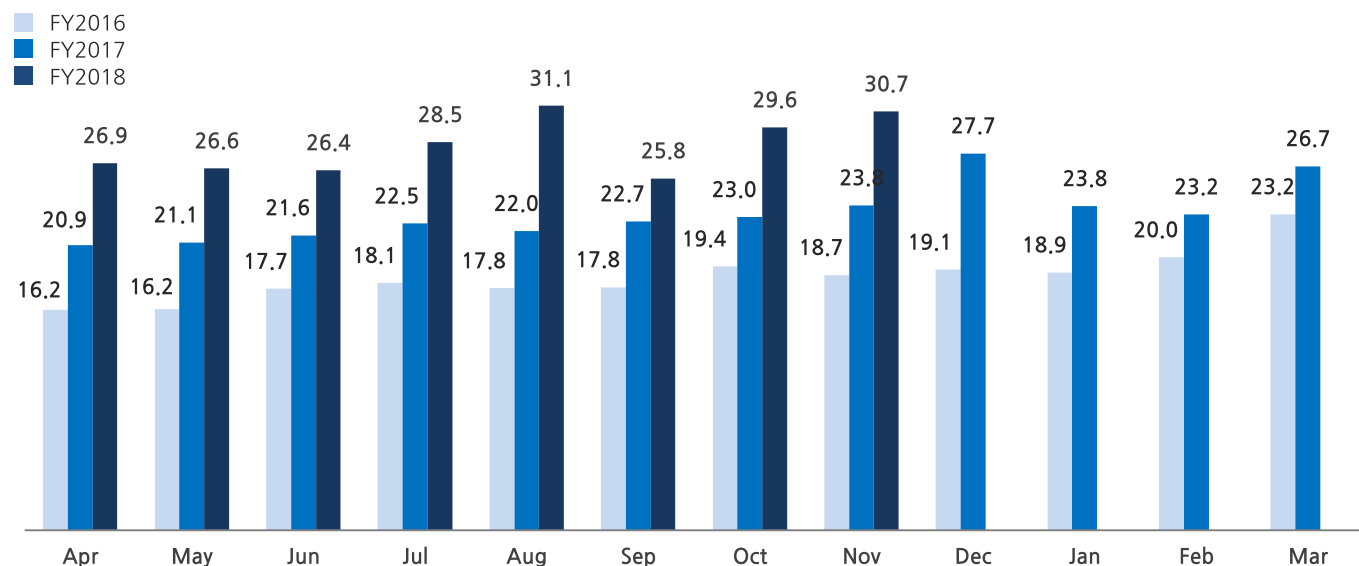
#### Year on Year

	Apr	May	Jun	Jul	Aug	Sep	Oct	Nov	Dec	Jan	Feb	Mar
FY2017	+42%	+45%	+30%	+39%	+45%	+27%	+36%	+46%	+32%	+52%	+45%	+34%
FY2018	+29%	+26%	+21%	+23%	+10%	+18%	+22%	+7%				

## Payment Service Business

### ● Processing Volume

Unit: JPY billion



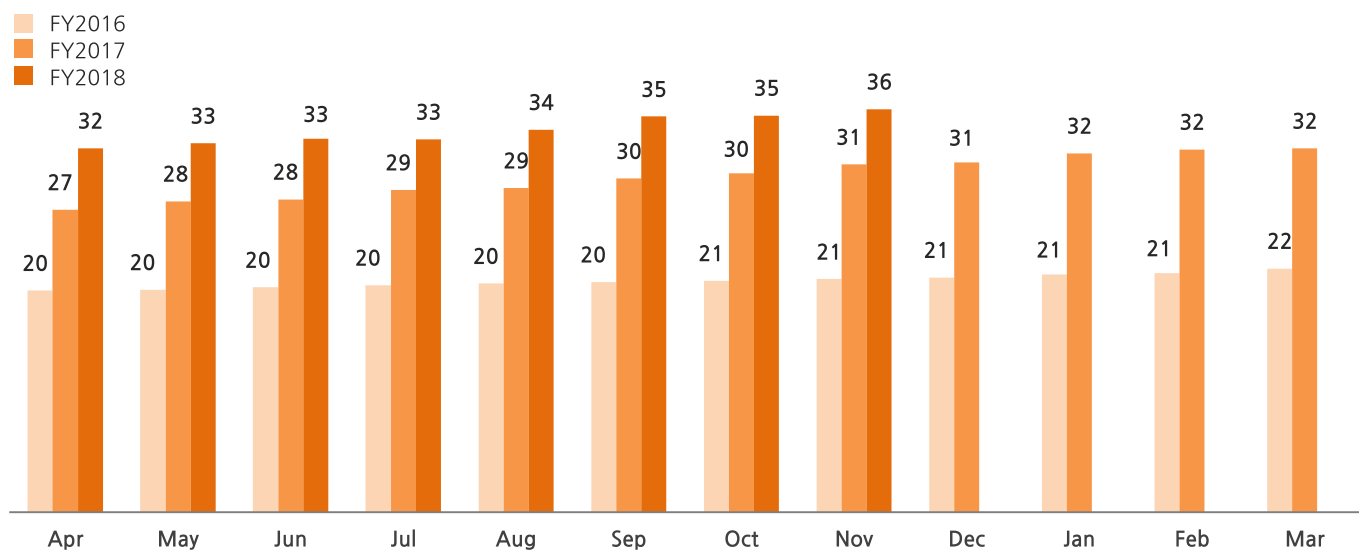
#### Year on Year

	Apr	May	Jun	Jul	Aug	Sep	Oct	Nov	Dec	Jan	Feb	Mar
FY2017	+30%	+30%	+22%	+24%	+24%	+27%	+19%	+27%	+45%	+26%	+16%	+15%
FY2018	+29%	+26%	+22%	+27%	+42%	14%	+29%	<b>+29%</b>				

## Corporate Support Business

### ● Cloud Product Sales for each month

Unit: JPY Million



#### Year on Year

	Apr	May	Jun	Jul	Aug	Sep	Oct	Nov	Dec	Jan	Feb	Mar
FY2017	+36%	+40%	+39%	+42%	+42%	+45%	+46%	+49%	+49%	+51%	+52%	+49%
FY2018	+20%	+19%	+19%	+16%	+18%	+19%	+17%	<b>+16%</b>				

## IR Contacts

Tel 02-2038-2791

Email [ir@sbi-finsol.co.jp](mailto:ir@sbi-finsol.co.jp)

Site <https://www.sbi-finsol.co.jp/kr/>

Address 17F Two IFC, 10, Gukjegeumyung-ro, Yeongdeungpo-gu, Seoul, Korea

※Financial data in this document is not audited by external auditor is prepared for investors' convenience. It may be revised during auditing process by external auditor.