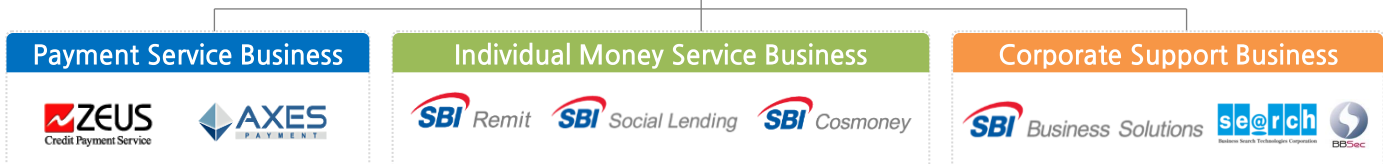


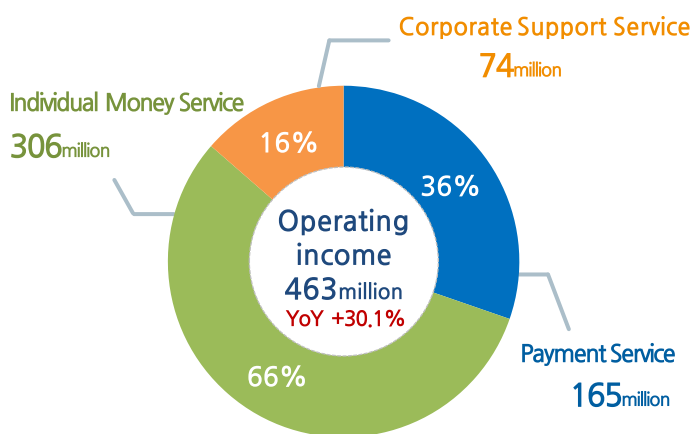
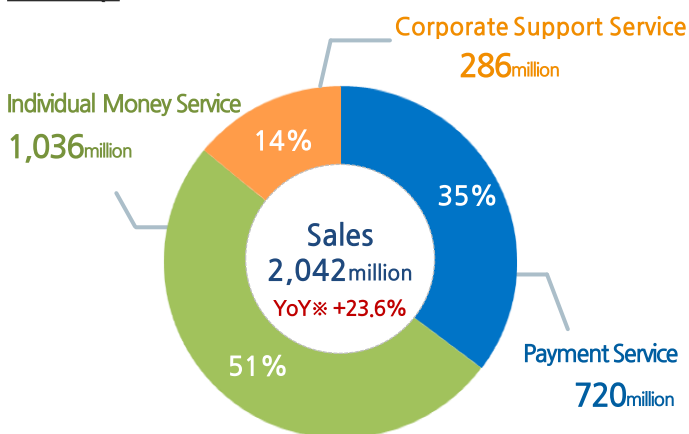
IR Focus Monthly KPI (2018.07)

At a Glance



FY2018 Q1

Unit: JPY



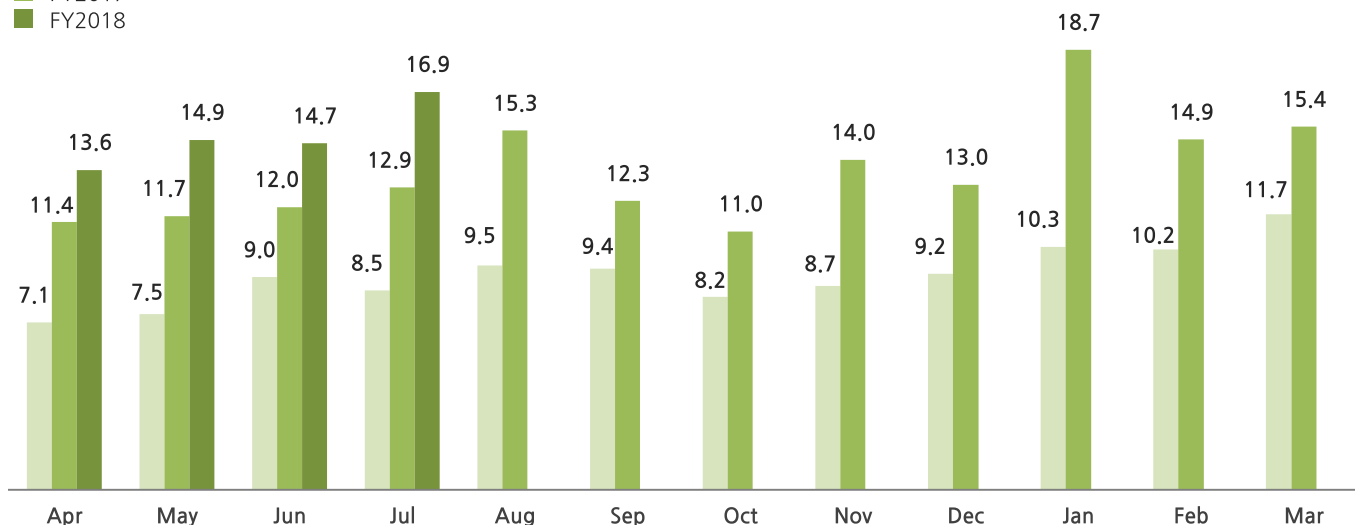
※ Upon applying IFRS 15, presentation method of sales is changed from in the first quarter of current fiscal year.

Individual Money Service Business(International Money Transfer)

International Money Transfer Amount

■ FY2016
■ FY2017
■ FY2018

Unit: JPY billion



Year on Year

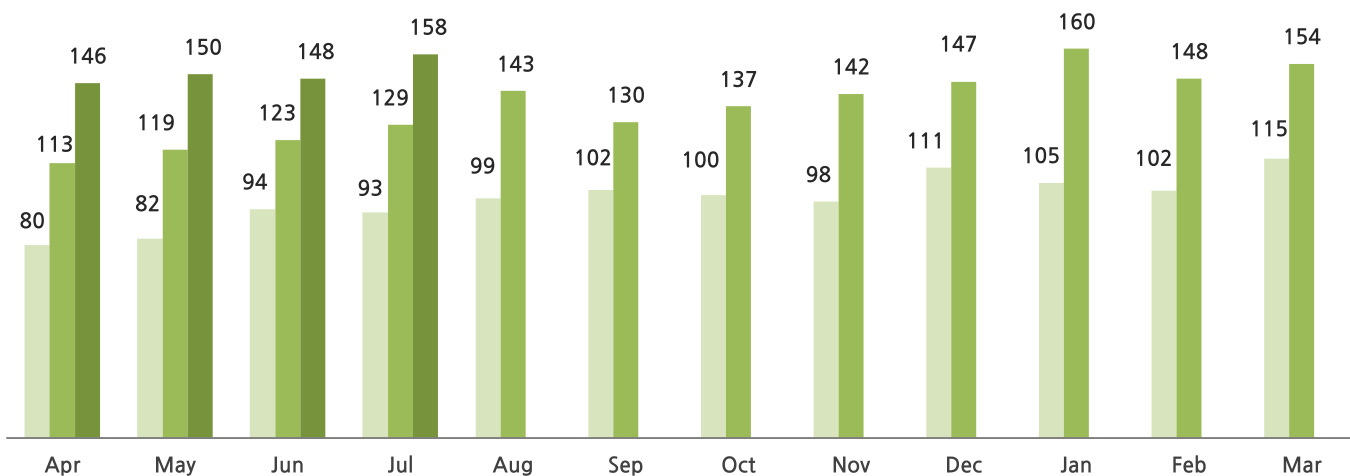
	Apr	May	Jun	Jul	Aug	Sep	Oct	Nov	Dec	Jan	Feb	Mar
FY2017	+60%	+56%	+33%	+52%	+60%	+30%	+34%	+62%	+41%	+81%	+46%	+32%
FY2018	+19%	+28%	+23%	+32%								

Individual Money Service Business(International Money Transfer)

Unit: Thousand

● Number of International Money Transfer

■ FY2016
■ FY2017
■ FY2018



Year on Year

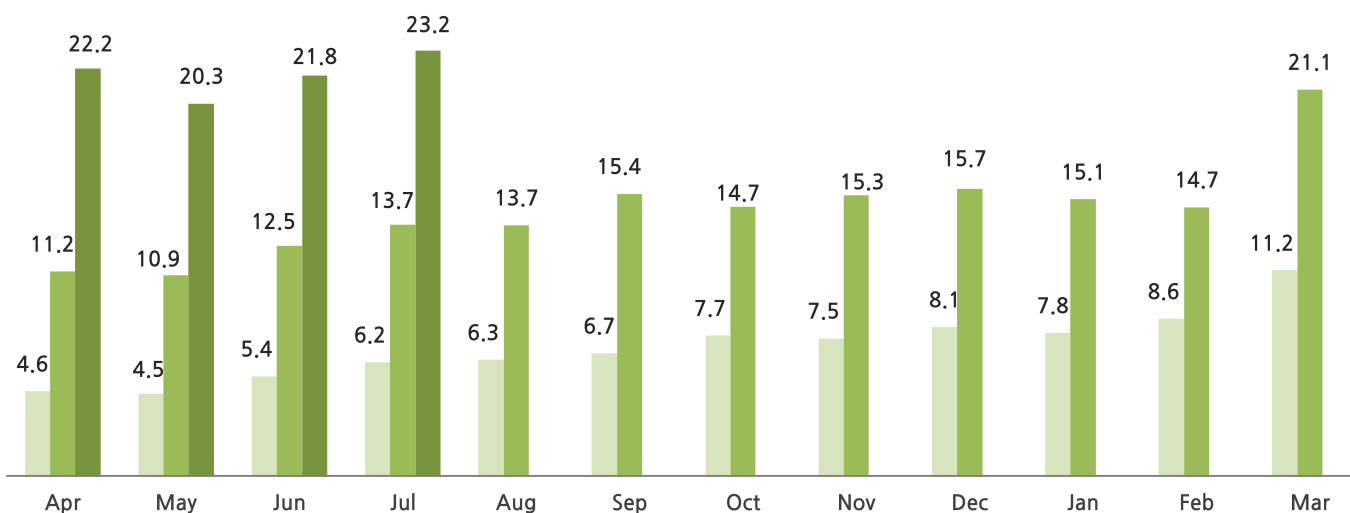
	Apr	May	Jun	Jul	Aug	Sep	Oct	Nov	Dec	Jan	Feb	Mar
FY2017	+42%	+45%	+30%	+39%	+45%	+27%	+36%	+46%	+32%	+52%	+45%	+34%
FY2018	+29%	+26%	+21%	+23%								

Individual Money Service Business(Social Lending)

Unit: JPY billion

● Loan Balance

■ FY2016
■ FY2017
■ FY2018



Year on Year

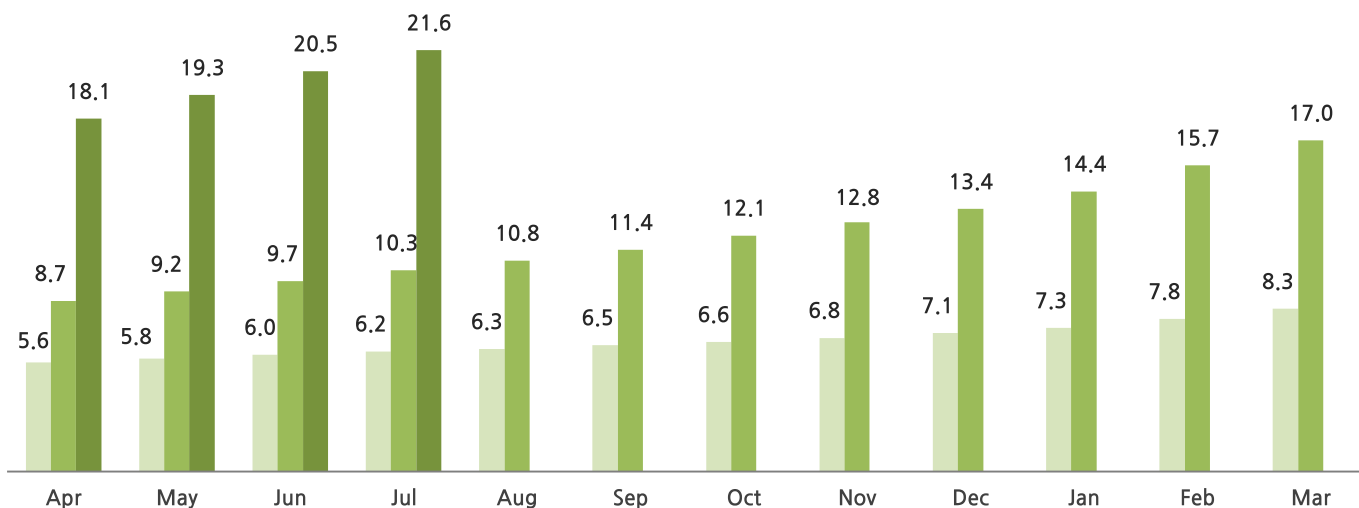
	Apr	May	Jun	Jul	Aug	Sep	Oct	Nov	Dec	Jan	Feb	Mar
FY2017	+141%	+144%	+131%	+121%	+116%	+130%	+92%	+104%	+93%	+93%	+71%	+88%
FY2018	+99%	+85%	+74%	+70%								

Individual Money Service Business(Social Lending)

Unit: Person(Thousand)

● Number of Registered Investors(Cumulative)

■ FY2016
■ FY2017
■ FY2018



Year on Year

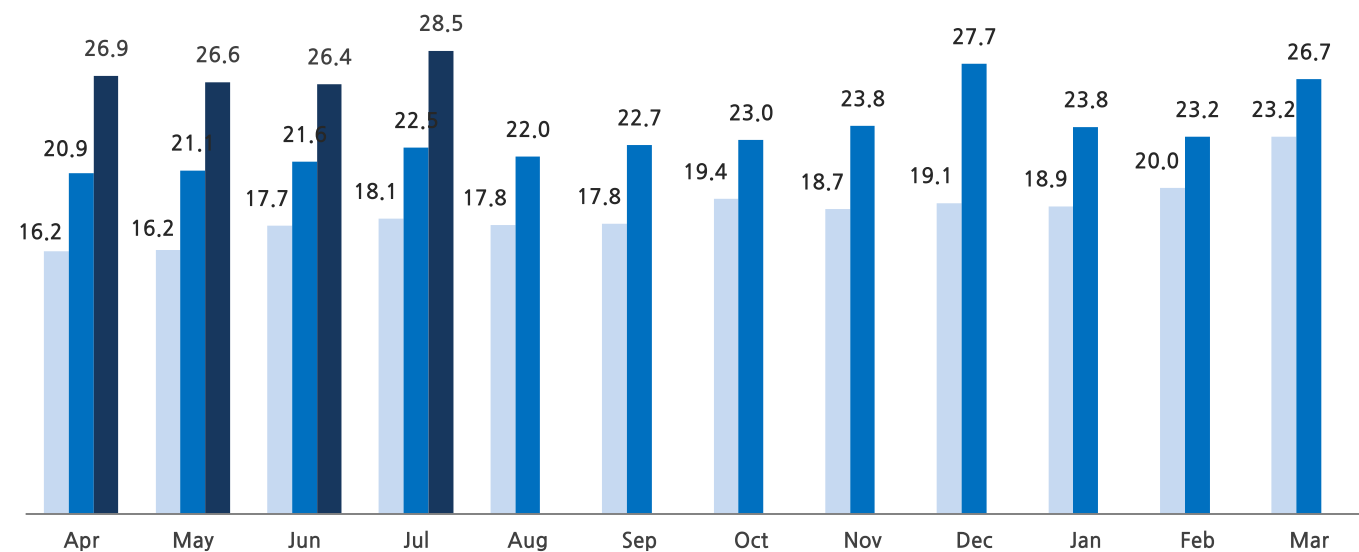
	Apr	May	Jun	Jul	Aug	Sep	Oct	Nov	Dec	Jan	Feb	Mar
FY2017	+57%	+59%	+63%	+67%	+72%	+76%	+82%	+87%	+90%	+95%	+101%	+104%
FY2018	+107%	+109%	+111%	+109%								

Payment Service Business

● Processing Volume

Unit: JPY billion

■ FY2016
■ FY2017
■ FY2018

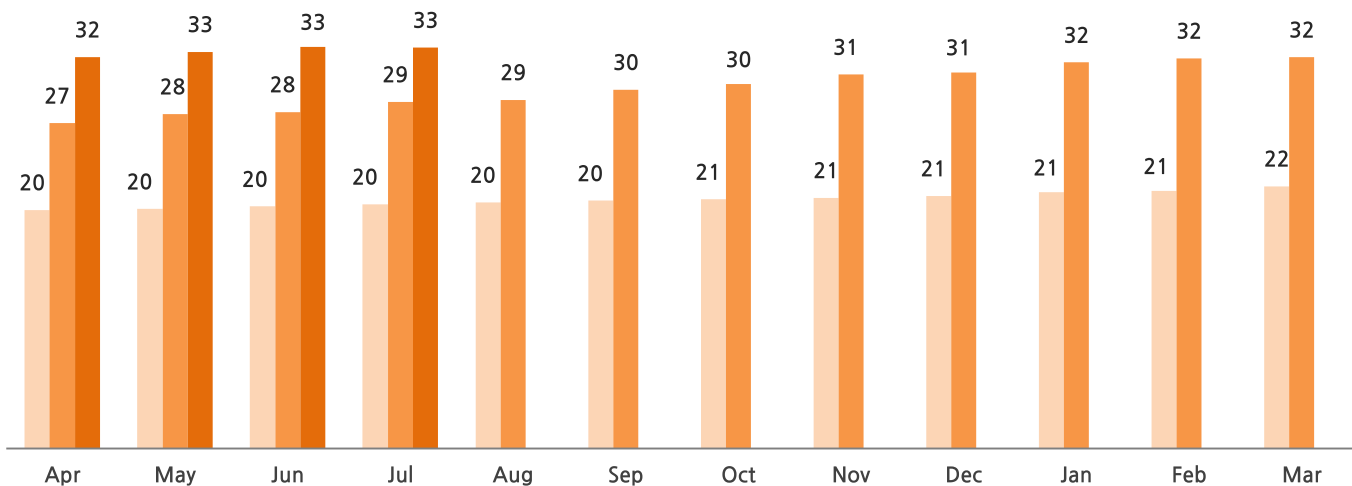


Year on Year

	Apr	May	Jun	Jul	Aug	Sep	Oct	Nov	Dec	Jan	Feb	Mar
FY2017	+30%	+30%	+22%	+24%	+24%	+27%	+19%	+27%	+45%	+26%	+16%	+15%
FY2018	+29%	+26%	+22%	27%								

● Cloud product Sales for each month

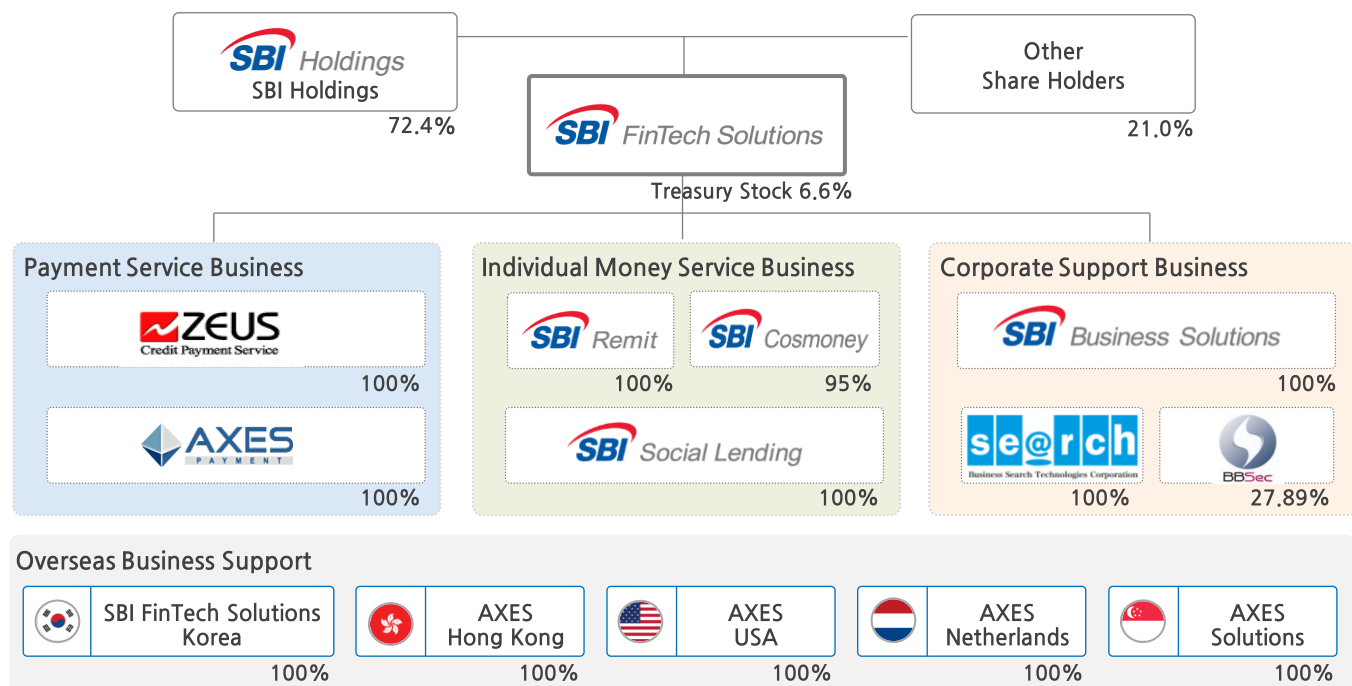
- FY2016
- FY2017
- FY2018



Year on Year												
	Apr	May	Jun	Jul	Aug	Sep	Oct	Nov	Dec	Jan	Feb	Mar
FY2017	+36%	+40%	+39%	+42%	+42%	+45%	+46%	+49%	+49%	+51%	+52%	+49%
FY2018	+20%	+19%	+19%	+16%								

SBI FinTech Solutions Organization Structure

(As of 2018.06.30)



IR Contacts

Tel 02-2038-2791 Email ir@sbi-finsol.co.jp Site <https://www.sbi-finsol.co.jp/kr/>
 Address 17F Two IFC, 10, Gukjegeumyung-ro, Yeongdeungpo-gu, Seoul, Korea